

**Powerful and economical  
with maintenance-free 3-phase  
AC drive motor**

**Manoeuvrable and compact  
with very short chassis**

**Extremely space-saving and safe  
with tiller in upright position  
via crawl speed button**

**Sensitive lifting and lowering  
from the tiller through adjustable  
speed of lift motor**

**Integrated charger for easy  
charging at any 13 Amp plug**



## **EJC 110/112**

### **Electric pedestrian stacker (1000 and 1200 kg)**

The pedestrian stackers of the EJC range 1 show their strength wherever transporting over short distances and stacking up to a lift height of 3600 mm take place. With a very short front length (L<sub>2</sub> dimension) of only 637 mm, the EJC is particularly effortless and safe to manoeuvre, even in confined spaces.

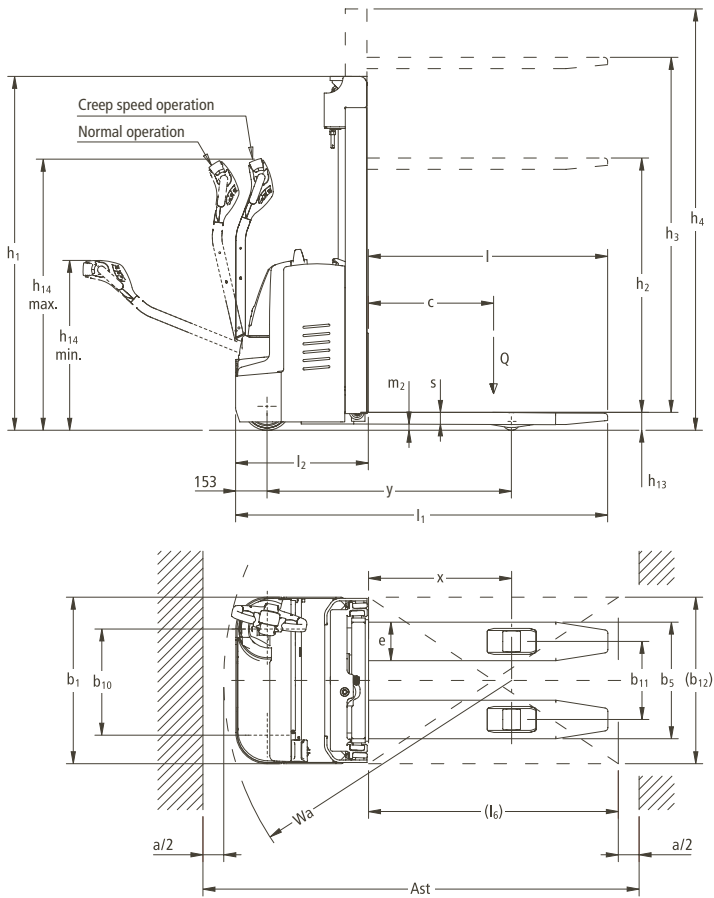
The high performance drive motor in 3-phase AC technology is an added bonus. Its optimised set up ensures high speed

and excellent acceleration on all applications maximising productivity.

Another advantage of the truck is its lift control. This enables the operator to pick up loads accurately and sensitively. Makes the depositing of large loads in narrow racking easier. The low noise during slow lifting also makes work for the operator easier. Proportional hydraulics ensure gentle depositing of the load on the floor or in the racking.

The power is supplied to the EJC 110/112 via batteries with capacities up to 200 Ah. An integrated charger allows flexible charging of the battery at any 13 Amp plug socket.

# EJC 110/112



Standard mast types (mm)								
Designation	Closed mast height $h_1^*$	Lift height $h_3$	Free lift $h_2$	Extended mast height $h_4$	Closed mast height $h_1^*$	Lift height $h_3$	Free lift $h_2$	Extended mast height $h_4$
	<b>EJC 110</b>				<b>EJC 112</b>			
Two-stage mast ZT	1750	2500	100	2973	1750	2500	100	2973
	1850	2700	100	3173	1850	2700	100	3173
	1950	2900	100	3373	1950	2900	100	3373
	2100	3200	100	3673	2100	3200	100	3673
	2300	3600	100	4073	2300	3600	100	4073
Two-stage mast ZZ					<b>EJC 112</b>			
					1700	2500	1227	2973
					1900	2900	1427	3373
					2050	3200	1577	3673
				2250	3600	1777	4073	

\* at 100 mm free lift

# Technical Data in line with VDI 2198 as at: 08/2010

Identification	1.1	Manufacturer (abbreviation)		Jungheinrich	Jungheinrich	1.1
	1.2	Manufacturer's type designation		<b>EJC 110</b>	<b>EJC 112</b>	1.2
	1.3	Drive		electric (battery)	electric (battery)	1.3
	1.4	Type of operation		pedestrian	pedestrian	1.4
	1.5	Load capacity/rated load	Q (t)	1.0	1.2	1.5
	1.6	Load centre distance	c (mm)	600	600	1.6
	1.8	Load distance, centre of drive axle to fork	x (mm)	687	687	1.8
	1.9	Wheelbase	y (mm)	1171	1171	1.9
	Weights	2.1	Service weight incl. battery (see line 6.5)	kg	805 <sup>1)</sup>	820 <sup>1)</sup>
2.2		Axle loading, laden front/rear	kg	650/1155 <sup>1)</sup>	660/1360 <sup>1)</sup>	2.2
2.3		Axle loading, unladen front/rear	kg	565/240 <sup>1)</sup>	575/245 <sup>1)</sup>	2.3
Wheels, Chassis	3.1	Tyres		PU/Vulkollan®	PU/Vulkollan®	3.1
	3.2	Tyre size, front	mm	Ø230x70	Ø230x70	3.2
	3.3	Tyre size, rear	mm	Ø85x100	Ø85x110	3.3
	3.4	Additional wheels (dimensions)	mm	Ø140x54	Ø140x54	3.4
	3.5	Wheels, number front/rear (x = driven wheels)		1x + 1/2	1x + 1/2	3.5
	3.6	Track width, front	b <sub>10</sub> (mm)	510	510	3.6
	3.7	Track width, rear	b <sub>11</sub> (mm)	375	375	3.7
Basic Dimensions	4.2	Lowered mast height	h <sub>1</sub> (mm)	1950 <sup>1)</sup>	1950 <sup>1)</sup>	4.2
	4.3	Free lift	h <sub>2</sub> (mm)	100 <sup>1)</sup>	100 <sup>1)</sup>	4.3
	4.4	Lift height	h <sub>3</sub> (mm)	2900 <sup>1)</sup>	2900 <sup>1)</sup>	4.4
	4.5	Extended mast height	h <sub>4</sub> (mm)	3373 <sup>1)</sup>	3373 <sup>1)</sup>	4.5
	4.9	Height of tiller in drive position min./max.	h <sub>14</sub> (mm)	820/1310	820/1310	4.9
	4.15	Lowered height	h <sub>13</sub> (mm)	90	90	4.15
	4.19	Overall length	l <sub>1</sub> (mm)	1787	1787	4.19
	4.20	Length to face of forks	l <sub>2</sub> (mm)	637	637	4.20
	4.21	Overall width	b <sub>1</sub> /b <sub>2</sub> (mm)	800	800	4.21
	4.22	Fork dimensions	s/e/l (mm)	56/185/1150	56/185/1150	4.22
	4.25	Width over forks	b <sub>5</sub> (mm)	560	560	4.25
	4.32	Ground clearance, centre of wheelbase	m <sub>2</sub> (mm)	30	30	4.32
	4.33	Aisle width for pallets 1000x1200 crossways	Ast (mm)	2046 <sup>3)</sup>	2046 <sup>3)</sup>	4.33
	4.34	Aisle width for pallets 800x1200 lengthways	Ast (mm)	2096 <sup>4)</sup>	2096 <sup>4)</sup>	4.34
	4.35	Turning radius	Wa (mm)	1383 <sup>2)</sup>	1383 <sup>2)</sup>	4.35
Performance Data	5.1	Travel speed, laden/unladen	km/h	6.0/6.0	6.0/6.0	5.1
	5.2	Lift speed, laden/unladen	m/s	0.13/0.20	0.12/0.20	5.2
	5.3	Lowering speed, laden/unladen	m/s	0.43/0.40	0.43/0.40	5.3
	5.8	Max. gradient performance, laden/unladen	%	8/16	8/16	5.8
	5.10	Service brake		electric	electric	5.10
E-Motor	6.1	Drive motor rating S <sub>2</sub> 60 min.	kW	1.0	1.0	6.1
	6.2	Lift motor rating at S <sub>3</sub> 10 %	kW	1.7	1.9	6.2
	6.3	Battery acc. to DIN 43531/35/36 A, B, C, no		no	no	6.3
	6.4	Battery voltage, nominal capacity K <sub>5</sub>	V/Ah	24/200	24/200	6.4
	6.5	Battery weight	kg	185	185	6.5
Others	8.1	Type of drive control		AC SpeedControl	AC SpeedControl	8.1
	8.4	Sound level at the driver's ear according to EN 12 053	dB(A)	70	70	8.4
1) Values for standard mast 2-stage telescopic 2) Tiller in upright position (crawl speed) 3) Diagonal according to VDI + 214 mm 4) Diagonal according to VDI + 138 mm						

This specification sheet according to VDI regulation 2198 only provides technical values for the standard truck. Non-standard tyres, different masts, additional equipment, etc. could produce other values. Right reserved for technical changes and improvements.

# Make use of the advantages

## Innovative 3-phase AC technology

Jungheinrich motors in 3-phase AC technology provide you with more higher productivity and as well as, a reduction in operating costs. Make use of these advantages:

- High efficiency with excellent energy management.
- Powerful acceleration.
- Quick travel direction change without the usual pause.
- No carbon brushes – the drive motor is maintenance-free.
- Two-year warranty on drive motor.



The EJC's compact chassis

## Manoeuvrable and compact

Due to its very short chassis of only 637 mm, the EJC can be operated even in the most confined spaces. In addition, the truck can be operated with the tiller in the upright position, utilising the crawl speed button.

## Comfortable depositing and retrieval

All lifting and lowering functions are effortlessly controlled from the multi-function tiller head. The operator can thus concentrate fully on depositing or retrieval. Other performance enhancing features that make depositing and retrieval operations safer as well as reducing costs are:

- Precise and gentle depositing of loads with lift speed controlled motor.
- Low noise during slow lifting with "lift control".
- Gentle depositing of load through proportional hydraulics.
- Long safety tiller for adequate distance between operator and truck.

## Informed at any time

Extensive instrument display:

- Battery discharge indicator (3 colour LED with lift cut out) with lift stop.
- Information display "CanDis" (optional) with added operating hour display and fault code memory.
- Activation of truck via PIN and selection of 3 travel programmes through "Can-Code" (optional).
- Adjustable travel parameters through CanDis and CanCode (optional).



Access authorisation CanCode and CanDis (optional)

## Comfortable travel

The Jungheinrich "speed control" facilitates comfortable, safe travel with tailoring to any application:

- The pre-set speed on the drive switch is maintained in every travel situation.
- The operator is able to choose between 3 different travel programmes (optional).
- Regenerative braking on reducing the travel speed.
- Very low noise level during travel.



Integrated charger 30 A for comfortable battery charging at any mains socket

## Long operating times

- Energy-saving 3-phase AC technology – in combination with battery capacities up to 200 Ah (2 EPzB 130/150/200 Ah) – ensures long operating times.
- Integrated charger (24V/30A) for wet and maintenance-free batteries for easy charging at any mains socket.

## Additional equipment

- Battery discharge indicator/operating hour meter.
- Access authorisation via CanCode.
- Vertical load guard.

## Jungheinrich UK Ltd.

Head Office:

Sherbourne House · Sherbourne Drive  
Tilbrook · Milton Keynes MK7 8HX  
Phone 01908 363100  
Fax 01908 363180

info@jungheinrich.co.uk  
www.jungheinrich.co.uk



**JUNGHEINRICH**  
Well worthwhile