

**3 Phase AC drive motor for maximum performance and low energy consumption**

**Precise load positioning with electronically controlled lifting and proportional lowering**

**Fully manoeuvrable with tiller in upright position via crawl speed button**

**Optimum drive characteristics with hydraulically cushioned ProTraLink suspension**

**Multi-task handle for intuitive operation**



## EJD 220

### Electric pedestrian pallet truck/stacker (2000 kg)

The EJD 220 is a multi-talented truck when it comes to the handling of loads. It combines the operation of a pedestrian pallet truck and stacker in one machine: from lorry loading and offloading to pallet transporting, to stacking (max. 2560 mm lift height), it is a flexible truck.

Its greatest advantage is as a double-deck stacker, it is able to lift two Euro pallets at the same time. Compared with a traditional pallet truck/stacker, it can thus get through its workload twice as fast. The EJD can carry 2000 kg when applied as a pallet truck, 1000 kg with the forks raised or 2x1000 kg in double-deck operation. The

EJD is an extremely sturdy and reliable truck: the robust 8 mm chassis, the powerful 1.6 kW drive motor with the latest 3 Phase AC technology, batteries with up to 375 Ah and lateral removal as well as the rigid mast ensure extremely efficient operation in even the most demanding applications.

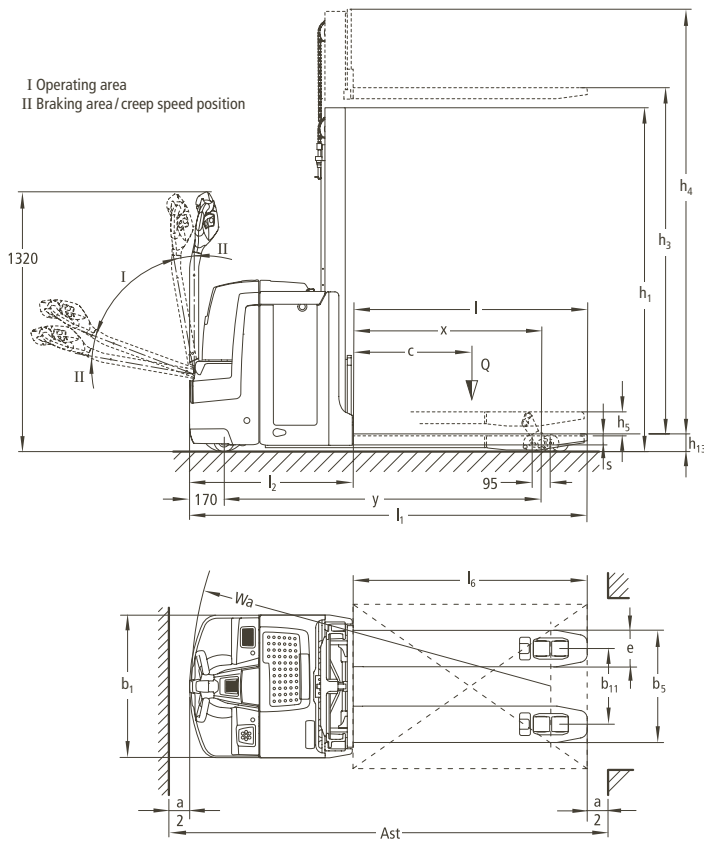
The patented ProTraLink support wheel system with hydraulic cushioning for safe stacking ensures high stability and safe travel – an absolute must on ramps and loading platforms.

The raising support arms also contribute to safe travel, for instance on thresholds,

ramps and uneven floors. They increase the floor clearance and thus ensure simple and safe operation “cross-over”.

And if space becomes too tight on lorries or in narrow aisles, the crawl speed button facilitates safe travel with the tiller in the upright position. One touch of the button is sufficient: the brake is released and the drive switch controls travel speed at automatically much reduced speed.

# EJD 220



Standard mast types (mm)			
Two-stage mast ZT			
h <sub>1</sub>	h <sub>2</sub>	h <sub>3</sub>	h <sub>4</sub>
1350	100	1660	2150
1530	100	2010	2500
1810	100	2560	3050
Three-stage mast DZ			
h <sub>1</sub>	h <sub>2</sub>	h <sub>3</sub>	h <sub>4</sub>
1216	100	2050	2540
1366	100	2500	2990



# Technical data in line with VDI 2198 as at: 06/2010

Identification	1.1	Manufacturer (abbreviation)		Jungheinrich	1.1	
	1.2	Manufacturer's type designation		<b>EJD 220</b>	1.2	
	1.3	Drive		electric	1.3	
	1.4	Operator type		pedestrian	1.4	
	1.5	Load capacity/rated load	Q (t)		2.0	1.5
		Load capacity mast lift	Q (t)		1.0	
		Load capacity support arm lift	Q (t)		2.0	
	1.6	Load centre distance	c (mm)		600	1.6
	1.8	Load distance (Centre of load axle to fork face)	x (mm)		957 <sup>3)</sup>	1.8
1.9	Wheelbase	y (mm)		1617 <sup>3)</sup> 4)	1.9	
Weights	2.1	Service weight incl. battery (see line 6.5)	kg	945	2.1	
	2.2	Axle loading, laden front/rear	kg	1120/1825	2.2	
	2.3	Axle loading, unladen front/rear	kg	665/280	2.3	
Wheels, Chassis	3.1	Tyres		PU	3.1	
	3.2	Tyre size, front	mm	Ø230x65	3.2	
	3.3	Tyre size, rear	mm	Ø85x95/Ø85x75	3.3	
	3.4	Additional wheels (dimensions)	mm	Ø100 x 40	3.4	
	3.5	Wheels, number front rear (x = driven wheels)		1x+2/2 or 4	3.5	
	3.6	Track width, front	b <sub>10</sub> (mm)		508	3.6
	3.7	Track width, rear	b <sub>11</sub> (mm)		385	3.7
Basic Dimensions	4.4	Lift (standard mast)	h <sub>1</sub> (mm)	1660	4.4	
	4.6	Initial lift	h <sub>5</sub> (mm)	122	4.6	
	4.9	Height of tiller in drive position min./max.	h <sub>14</sub> (mm)	711/1320	4.9	
	4.15	Height, lowered	h <sub>13</sub> (mm)	90	4.15	
	4.19	Overall length	l <sub>1</sub> (mm)	2022 <sup>4)</sup>	4.19	
	4.20	Length to face of forks	l <sub>2</sub> (mm)	832 <sup>4)</sup>	4.20	
	4.21	Overall width	b <sub>1</sub> /b <sub>2</sub> (mm)	726/-	4.21	
	4.22	Fork dimensions	s/e/l (mm)	56/185/1190	4.22	
	4.25	Width across forks	b <sub>5</sub> (mm)	570	4.25	
	4.32	Ground clearance, centre of wheelbase	m <sub>2</sub> (mm)	20	4.32	
	4.33	Aisle width for pallets 1000x1200 crossways	Ast (mm)	2233 <sup>1)</sup>	4.33	
	4.34	Aisle width for pallets 800x1200 lengthways	Ast (mm)	2243 <sup>2)</sup>	4.34	
	4.35	Turning radius	Wa (mm)	1800 <sup>3)</sup> 4)	4.35	
Performance Data	5.1	Travel speed, laden/unladen	km/h	6.0/6.0	5.1	
	5.2	Lift speed, laden/unladen	m/s	0.14/0.25	5.2	
	5.3	Lowering speed, laden/unladen	m/s	0.25/0.25	5.3	
	5.8	Max. gradeability, laden/unladen	%	9/15	5.8	
	5.10	Service brake		regenerative	5.10	
E-Motor	6.1	Drive motor rating S <sub>2</sub> 60 min.	kW	1.6	6.1	
	6.2	Lift motor rating at S <sub>3</sub> 12%	kW	2.0	6.2	
	6.3	Battery acc. to DIN 43531/35/36 A, B, C, no		DIN 43535 B	6.3	
	6.4	Battery voltage, nominal capacity K <sub>5</sub>	V/Ah	24/250 (375)	6.4	
	6.5	Battery weight	kg	220	6.5	
	6.6	Energy consumption acc. to VDI cycle	kWh/h	0.54	6.6	
Others	8.1	Type of drive control		AC SpeedControl	8.1	
	8.4	Sound level at the driver's ear according to EN 12053	dB(A)	59	8.4	

- 1) Diagonal according to VDI: +369 mm  
2) Diagonal according to VDI: +225 mm  
3) Load section lowered: +48 mm  
4) Battery compartment L (375 Ah) +72 mm

# Make use of the advantages

## Innovative 3 Phase AC technology

Jungheinrich 3 Phase AC motors and controllers offer higher performance levels and save on running costs. The benefits are:

- High efficiency levels with excellent energy management.
- Powerful acceleration.
- No carbon brushes – maintenance-free drive motor.
- Drive motor and controller perfectly tuned by in-house production.



Double-deck lorry loading

## Comfortable stacking and retrieving

All lifting and lowering operations are easily controlled by the multi-functional control handle. This allows the operator to concentrate fully on stacking and retrieving. Other features that make stacking and retrieving particularly safe and efficient include:

- Precise, sensitive load lifting through speed controlled hydraulic motor.
- Gentle load depositing with proportional hydraulics.
- Long safety tiller provides sufficient distance between the operator and the truck.

- Crawl speed button for travelling in restricted conditions with tiller in upright position.

## Optimum cornering and stable travelling

The sprung – hydraulically cushioned support wheels – is connected via the patented ProTraLink suspension which distributes the force depending on the situation: evenly on all wheels, concentrated on the outer support wheel when cornering. Other advantages are:

- Less support wheel wear when travelling up ramps at an angle. Both support wheels remain constantly at the same height through a mechanical link.
- On the EJD 220 ProTraLink adapts to the application: The suspension/cushioning is automatically adjusted depending on the load and lift height. The result: consistently high stability and hence safety, whilst transporting and stacking.

## Work in comfort

The EJD is ideally suited for double pallet handling. It has been robustly designed for high performance operation. Other advantages:

- Robust mast: maximum load for support arm lift 2000 kg; for mast lift 1000 kg.
- Outstanding view of the forks over profiled battery cover.
- A support arm stop ensures consistently precise positioning of pallets on the forks.
- High-performance, lift motor copes easily lifting very heavy loads.
- Large detachable storage compartment and clip pad for storage.

## Constant information flow

Extensive control panel gives the operator the satisfaction of having everything in view at all times.



Stacking pallets

- "CanDis" information display (optional) with additional hour meter and error code storage (optional).
- PIN activation of truck and choice of 3 travel programs via CanCode (optional).

## Long operating times

The energy-saving threephase AC system combined with a 375 Ah battery capacity ensures long operating times:

- Battery compartment size M: 2 EPzS 250 Ah battery.
- Battery compartment size L: 3 EPzS 375 Ah battery.
- Sideways battery removal for rapid changing in a multi-shift environment.
- On-board charger (24 V/30 A for wet cell batteries and maintenance-free batteries) for easy charging at any mains socket (optional).

## Optional equipment

- Cold store version.
- Load guard.

## Jungheinrich UK Ltd.

Head Office:

Sherbourne House · Sherbourne Drive  
Tilbrook · Milton Keynes MK7 8HX  
Phone 01908 363100  
Fax 01908 363180

info@jungheinrich.co.uk  
www.jungheinrich.co.uk



**JUNGHEINRICH**  
Well worthwhile