

Corrosion-resistant

Hygienic due to smooth chassis surface

High traction from two motors

Protected against jet washing

Electric steering



EJE i25 / EJC i15 / EJC i15z

Stainless steel pallet trucks

Jungheinrich stainless steel pallet trucks are designed for hardest applications in corrosive and humid environments as well as satisfying the most stringent hygienic requirements. Two separate motors assure powerful drive and excellent handling, even on difficult surfaces.

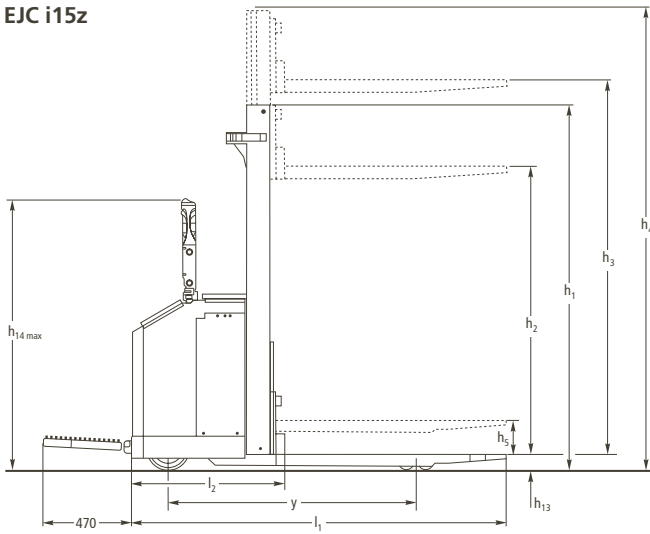
High quality stainless steel and fully enclosed electronics to protect against jet washing allows easy cleaning and disinfection. Added to this are high-technology seals with moving components offering extra protection. This more than satisfies the high demands made in the food, pharmaceutical and chemical industries.

The stand-on platform (optional) transforms the truck easily from a pedestrian-operated into a ride-on truck and thus increases operating comfort, especially during transport over longer distances.

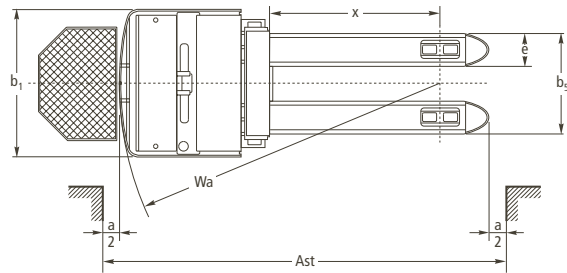
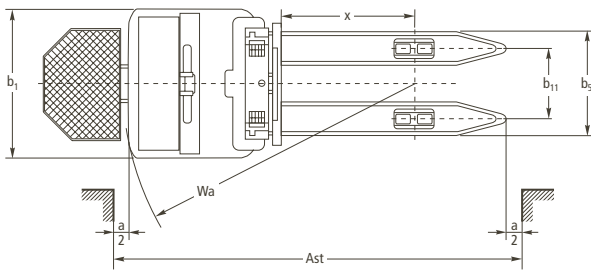
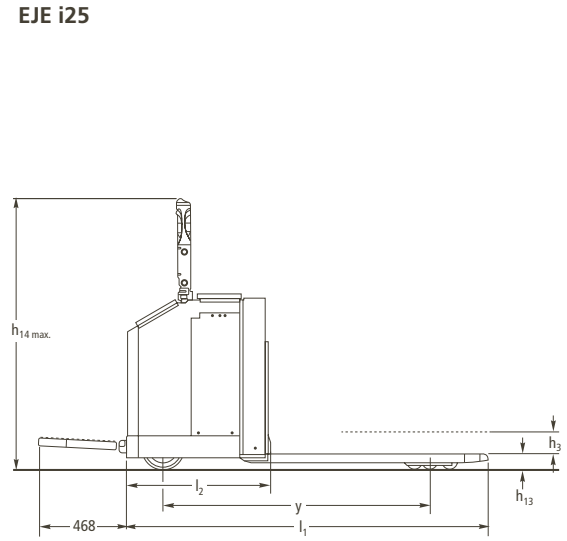
 **JUNGHEINRICH**

EJE i25/EJC i15/EJC i15z

EJC i15z



EJE i25



Technical data in line with VDI 2198 as at: 01/2008

Identification	1.1	Manufacturer (abbreviation)		Jungheinrich	Jungheinrich	Jungheinrich	1.1
	1.2	Manufacturer's type designation		EJE i25	EJC i15	EJC i15z	1.2
	1.3	Drive		electric	electric	electric	1.3
	1.4	Operator type		pedestrian	pedestrian	pedestrian	1.4
	1.5	Load capacity/rated load	Q (t)	2.5	1.5	1.5	1.5
	1.6	Load centre distance	c (mm)	600	600	600	1.6
	1.8	Load distance, centre of drive axle to fork	x (mm)	1072 ¹⁾	712	709 ¹⁾	1.8
	1.9	Wheelbase	y (mm)	1642 ¹⁾	1329	1445 ¹⁾	1.9
	Weights	2.1	Service weight incl. battery (see line 6.5)	kg	600	950	1150
Wheels, Chassis	3.1	Tyres		PU	PU	PU	3.1
	3.2	Tyre size, front		230 x 75	230 x 75	230 x 75	3.2
	3.3	Tyre size, rear		85 x 65	85 x 65	85 x 65	3.3
	3.5	Wheels, number front rear (x = driven wheels)		2-2x/4	2-2x/4	2-2x/4	3.5
	3.6	Tread, front	b ₁₀ (mm)	470	470	470	3.6
	3.7	Tread, rear	b ₁₁ (mm)	365	380	380	3.7
Basic Dimensions	4.2	Closed mast height	h ₁ (mm)		2370 ²⁾	2370 ¹⁾²⁾	4.2
	4.3	Free lift	h ₂ (mm)		1975 ²⁾	1975 ¹⁾²⁾	4.3
	4.4	Lift	h ₃ (mm)	200	2000 ²⁾	2000 ¹⁾²⁾	4.4
	4.5	Height, mast extended	h ₄ (mm)		2395 ²⁾	2395 ¹⁾²⁾	4.5
	4.6	Initial lift	h ₄ (mm)			200	4.6
	4.9	Height of tiller in drive position min./max.	h ₁₄ (mm)	1024/1596 ³⁾	1024/1596 ³⁾	1024/1596 ³⁾	4.9
	4.15	Height, lowered	h ₁₃ (mm)	86	86	86	4.15
	4.19	Overall length	l ₁ (mm)	1930/2400 ⁴⁾	2016/2486 ⁴⁾	2131/2601 ⁴⁾	4.19
	4.20	Length to face of forks	l ₂ (mm)	765	816	931	4.20
	4.21	Overall width	b ₁ /b ₂ (mm)	790/-	790/-	790/-	4.21
	4.22	Fork dimensions	s/e/l (mm)	55 x 170 x 1165	75 x 180 x 1200	75 x 190 x 1200	4.22
	4.25	Distance between fork-arms	b ₅ (mm)	535	560	570	4.25
4.32	Ground clearance, centre of wheelbase	m ₂ (mm)	40	40	40	4.32	
4.34	Aisle width for pallets 800 x 1200 lengthways	Ast (mm)	2198/2640 ⁴⁾	2253/2693 ⁴⁾⁵⁾	2366/2807 ⁴⁾⁵⁾	4.34	
4.35	Turning radius	Wa (mm)	1821/2265 ⁴⁾	1561/2001 ⁴⁾	1674/2115 ⁴⁾	4.35	
Performance Data	5.1	Travel speed, laden/unladen	km/h	5.4/6.0	5.4/6.0	5.4/6.0	5.1
	5.2	Lift speed, laden/unladen	m/s	0.06/0.09	0.16/0.25	0.16/0.25	5.2
	5.3	Lowering speed, laden/unladen	m/s	0.09/0.06	0.38/0.12	0.38/0.12	5.3
	5.8	Max. gradeability, laden/unladen	%	10/10	10/10	10/10	5.8
5.10	Service brake		electric	electric	electric	5.10	
Electric Engine	6.1	Drive motor rating S ₂ 60 min	kW	1.5/1.5 ⁶⁾	1.5/1.5 ⁶⁾	1.5/1.5 ⁶⁾	6.1
	6.3	Battery acc. to DIN 43531/35/36 A, B, C, no		no	no	no	6.3
	6.4	Battery voltage, nominal capacity K ₅	V/Ah	24/344	24/344	24/344	6.4
6.5	Battery weight	kg	262	262	262	6.5	
Others	8.1	Type of drive control		SpeedControl	SpeedControl	SpeedControl	8.1

- 1) lowered
2) values for single mast; with ZT mast: h₁ 1960 mm, h₂ 186 mm, h₃ 3000 mm, h₄ 3395 mm
3) with platform option: 1024/1446 mm
4) without platform option/with platform option (folded down)
5) values for turning in front of empty compartment
6) two drive motors

Make use of the advantages



Easy service access to drive compartment

Two motors – one power package

Optimum operation on virtually every surface due to robust technology:

- Excellent traction and lateral stability at any time due to two separate motors.
- Powerful drive and reliable braking.

- Production residues and wet floors are not an issue.

Water-resistant

No issues with high pressure cleaning and disinfecting:

- Fully sealed tiller head.
- Waterproof cover for controls and drive.
- No accumulation of liquids on the underside of truck.

Hygienic and practical

- Abrasion-proof surface, even with intensive use.
- Resistant to adherence of dirt and bacteria due to glass bead blasting.
- Conforms to EU directive for foodstuff production.
- Effortless manoeuvring over uneven floors with Initial Lift (optional).

High quality materials

The truck is designed to cope easily with its application ensuring high operational availability and long service life:

- Rust-resistant even in corrosive environments.
- The entire chassis consists of robust V2A stainless steel and the mast of extra strong duplex steel.
- All controls are made of high quality plastic.
- Robust 8 mm chassis.

Ergonomic operation

Excellent handling from electronic steering:

- 60° steering lock for 92° cornering.
- Stand-on platform (optional) for longer distances.
- Effortless battery change due to side-ways battery removal.



Enclosed tiller

Jungheinrich UK Ltd.

Head Office:

Sherbourne House · Sherbourne Drive
Tilbrook · Milton Keynes MK7 8HX
Phone 01908 363100
Fax 01908 363180

info@jungheinrich.co.uk
www.jungheinrich.co.uk

Jungheinrich AG
ISO 9001, ISO 14001
Certification of Quality and
Environment Management.



Jungheinrich trucks
conform to the European
Safety Requirements.



JUNGHEINRICH
Well worthwhile